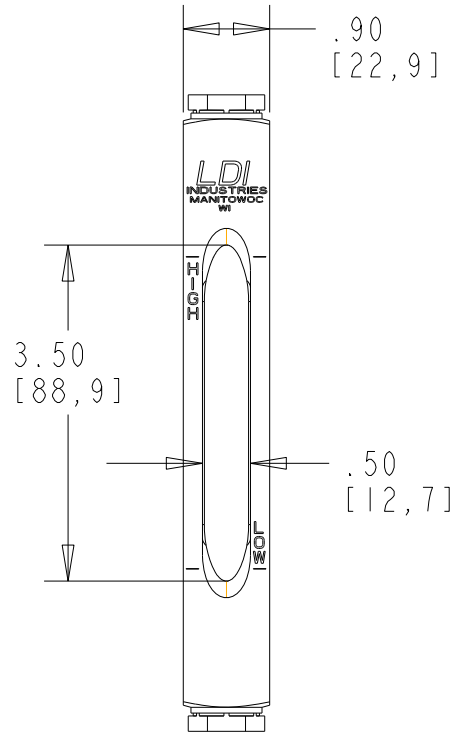
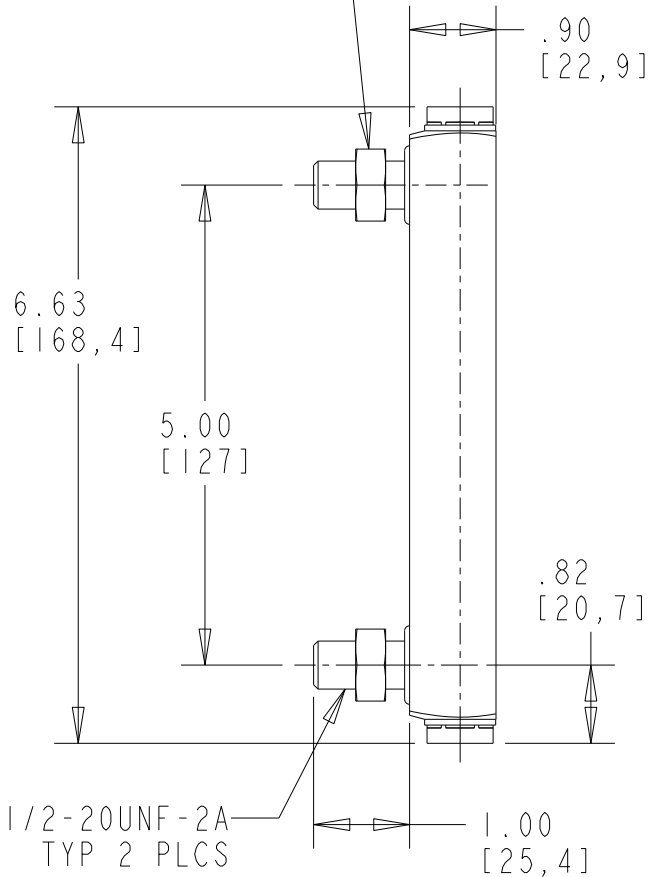


DWG. NO. G610-05-A-1_REF


ALL DIMENSION ARE IN INCHES (mm) AND FOR REFERENCE ONLY

ZINC PLATED LOCKNUT
ASSEMBLY TORQUE
60 IN-LB (6.8 N-m)
TYP 2 PLCS



NOTES:

1. ALUMINUM CONSTRUCTION
2. BUNA N SEALS
3. BOROSILICATE GLASS WITH REDLINE ON WHITE BACKGROUND
4. 250°F (121.1°C) MAX TEMPERATURE
5. 290 PSI (2.0 MPa) MAX PRESSURE @150°F (65.6°C) AND NO CORROSION

MATL				SEE NOTES	TOLERANCES		THIS DOCUMENT CONTAINS INFORMATION PROPRIETARY TO LDI Industries, Inc. AND IS FURNISHED UPON THE EXPRESS CONDITION THAT THE INFORMATION CONTAINED HEREIN WILL NOT BE DISCLOSED TO ANY THIRD PARTY OR USED DIRECTLY OR INDIRECTLY IN ANY WAY DETRIMENTAL TO THE INTEREST OF LDI Industries, Inc.							
MATL ITEM NO				-	UNLESS OTHERWISE SPECIFIED									
MATL DESC				-	.XX ±		 LDI INDUSTRIES, INC. MANITOWOC, WI HUNTLEY, IL							
FINISH				NONE	.XXX ±									
CUST NO				-	ALL RADII:		TITLE							
SIMILAR TO				-	ANGLES ±									
NOM WT (LBS.)				0.496	SURFACE FIN.		GAGE_BMNT_5.00_AL_F_NBR -							
RFQ NO				-	BRK CORNERS									
DWG NO./ITEM NO.				G610-05-A-1_REF										
REV	DATE	ECN NO.	BY	SCALE	1/2	DO NOT SCALE DRAWING	DRWN DMP	DATE	8/7/12	CHKD DMP	DATE	8/7/12	SHT 1/1	REV -